

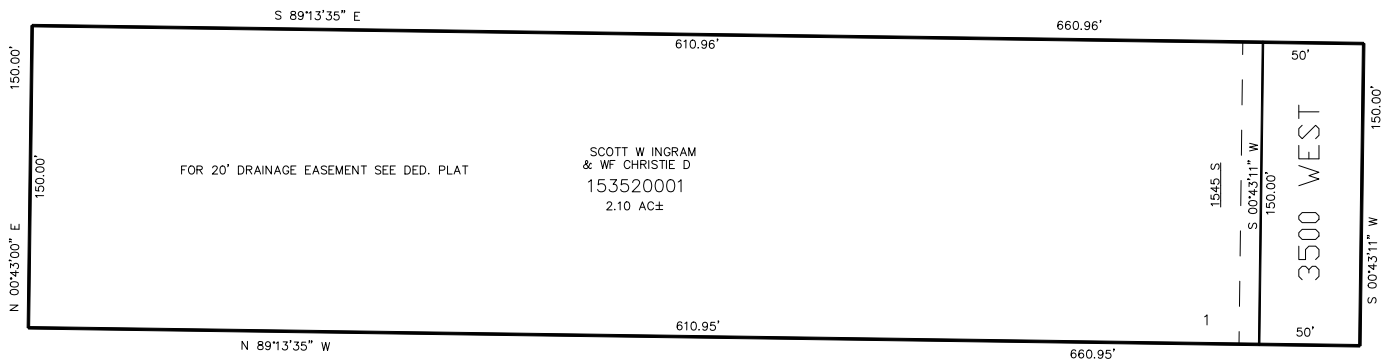
PART OF THE SE.1/4, OF SECTION 21, T.6N., R.2W., S.L.B. & M.
JERRY WEAVER SUBDIVISION

IN WEBER COUNTY
SCALE 1" = 50'

TAXING UNIT: 516

SEE PAGE 57

SEE PAGE 57



SEE PAGE 57

SEE PAGE 57

10' UTILITY & DRAINAGE EASEMENTS EACH
SIDE OF PROPERTY LINES AS INDICATED
BY DASHED LINES EXCEPT AS OTHERWISE
SHOWN.

FOR COMPLETE ENG DATA SEE
ORIGINAL DEDICATION PLAT IN
BOOK 58, PAGE 44 OF RECORDS.